

ThermalRock S (Slab)

General Product Information

ROXUL stone wool products are made of basalt, a volcanic stone.

ROXUL stone wool products are non-combustible with a melting point of approximately 1000°C. They are particularly suitable for thermal insulation, fire protection and sound reduction/absorption.

ROXUL stone wool is inorganic and contains no nutritious

substance. Therefore it will not be attacked by microorganisms. Stone wool will not rot and does not attract vermin.

No CFCs, HFCs, HCFCs, or asbestos are used in the manufacture of ROXUL stone wool products.



SGBP 2012-080



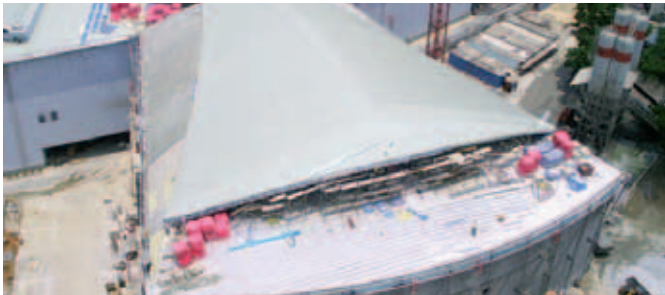
SGBP 2012-081
SGBP 2012-082
SGBP 2012-083
SGBP 2012-084
SGBP 2012-085

CREATE AND PROTECT®

ThermalRock S (Slab)

Common applications

ThermalRock S is manufactured in a wide variety of thicknesses and densities to suit most requirements, suitable for general application in residential, commercial and industrial buildings.



Dimensions

Standard sizes and densities

Thickness (mm)..... **25, 50, 75 and 100mm**
 Length x Width (mm)..... **1200mm x 600mm**
 Nominal Densities (kg/m³)..... **40 to 140**

Note: Please contact your local representatives for sizes and densities not stated in the datasheet.

Technical parameters

Product Types	S40	S60	S80	S100	S120	S140	Standards
Nominal Density (kg/m ³)	40	60	80	100	120	140	
* Thermal Conductivity 20°C λ Values (W/mK)	0.036	0.034	0.034	0.034	0.034	0.034	ASTM C518
Sound Absorption [BS EN ISO 354:2003]	Please contact your local representative for more information						
Fire Performance	Non-combustible / A1 Fire Classification						BS 476 Part 4/EN 13501-1
Water Vapour Absorption	Absorb less than 0.04 Vol %						ASTM C1104/C1104M
Water Absorption (partial immersion)	Less than 0.5kg/m ²						EN 1609:97

** Thermal conductivity values are based on testing conducted in external accredited laboratory in accordance to ASTM C518 :1991. Test reports are available upon request. For design, it is recommended to use a safety factor of 20% as design value.*

Note: The information contained in this data sheet is believed to be correct at the date of publication. ROCKWOOL Asia does not accept responsibility for the consequences of using ThermalRock S in applications different from those described above.

Facings

ThermalRock S products are available in plain, aluminium foil facings and one-sided or two-sided glass tissue facings.

Packaging and storage

ThermalRock S is shrink-wrapped in polyethylene sheets for ease of handling, transportation, storage and identification. Products should be stored indoors or under a water-proof covering.



CREATE AND PROTECT®

ROCKWOOL Malaysia Sdn Bhd
 Lot 4, Solok Waja 1,
 Bukit Raja Industrial Estate,
 41050 Klang, Selangor,
 Malaysia
 Tel: [+60] 3 3341 3444
 Fax: [+60] 3 3342 7290

ROCKWOOL Malaysia Sdn Bhd
 175 A&B,
 Kawasan Perindustrian
 Air Keroh, Jalan Lingkungan
 Usaha, 75450 Melaka
 Malaysia
 Tel: [+60] 6 233 2010
 Fax: [+60] 6 233 2012

ROCKWOOL Building Materials (Singapore) Pte Ltd
 No. 8, Tuas Avenue 2,
 Jurong Town
 Singapore 639448
 Tel: [+65] 6861 4722 / 6863 6233
 Fax: [+65] 6862 3533 / 6863 2933

ROCKWOOL Firesafe Insulation (Guangzhou) Co. Ltd.
 3 Taihua St, Yonghe Dist of
 Guangzhou Econ & Tech
 Development Dist, Guangzhou,
 Guangdong Province,
 P. R. China [511356]
 Tel: [+86] 20 8298 6668
 Fax: [+86] 20 8298 6877

ROCKWOOL (Thailand) Limited
 Hemaraj Eastern Industrial
 Estate (Map Ta Phut)
 1 Soi G 2, Pakornsongkrohraj
 Road, Huaypong, Muang,
 Rayong 21150, Thailand
 Tel: [+66] 3868 5110
 Fax: [+66] 3868 4938