



# VARITRANS

Technical Details Glass Partition Systems  
Compactline, Metalline

# INTELLIGENT SOLUTIONS FOR SOPHISTICATED INTERIOR DESIGN REQUIREMENTS

Movable walls and partitions from DORMA Hüppe offer the very highest quality, functionality and variability for room-dividing and room-shaping applications. These high standards derive in particular from many years of know-how and accrued competence in system development. The first partition systems were introduced into the German market back in 1955. Since that time, movable walls from DORMA Hüppe have become established on a worldwide scale. With sophisticated aesthetics and functionally reliable technology, they create useful, variable areas and improve

the cost-efficiency of interior space provision. There are no limits to the flexibility that they afford. Indeed, almost every conceivable requirement can be satisfied by applying a corresponding solution from DORMA Hüppe. The company also supplies systems with movable, transparent glass frontages for shopping malls, showrooms or customer service areas in banks – so rounding off an enormous range of interesting perspectives in living area design for today and tomorrow.



## CONTENTS

<b>Varitrans</b>	Properties and features	3
	Models	4
	Type overview	5
	Vertical cut	6
	Horizontal cut	7
	Element types	8
	Details of elements	10
<b>Schienensystem</b>	K track	12
	R track	13
<b>Varitrans</b>	Parking layout	14
	ComfortDrive – fully automatic	15



## DORMA HÜPPE VARITRANS GLASS PARTITION SYSTEM

### Properties and features

- Variable, transparent room divider with individually operable glass panels
- Functional design combined with high innovative quality
- Aesthetic, timeless styling
- Two product variants: Compactline, Metalline
- Panel heights:  
Manual: 3,500 mm,  
Automatic: 4,000 mm
- Panel widths:  
800 – 1,300 mm
- Automatic and manual operation possible
- Exceptional user convenience
- Toughened safety glass (TSG) and laminated safety glass (LSG) constructions
- Wide selection of panel types
- Systems can be equipped with angled and pass door panels as required
- Compact stacking arrangements in the parking position
- Uniform appearance
- Functional components invisibly integrated in the profiles
- Multiple layout designs: straight, angled, circular and polygonal configurations possible
- Glass design possibilities: screen printing, sand etching, transfers, artistic designs and plenty more
- High level of safety



You can find further details on the Varitrans featuring the automatic operator system in the technical brochure entitled **Varitrans ComfortDrive**

Further detailed information (brochures, folders, technology etc.) about our product range can be found in our product range file, available to order from our sales force.



## MODELS

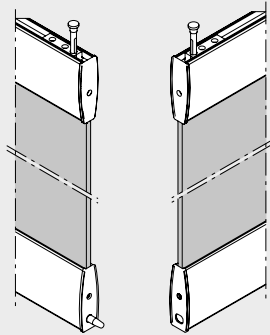


Features		Compactline		Metalline	
		Manual	ComfortDrive (fully automatic)	Manual	ComfortDrive (fully automatic)
Benefits	Characteristics	Operable sliding glass panel partition system with elegantly curved profiles providing a continuous, compact appearance		Operable sliding glass panel partition system with flush-mounted single-point fixings of stainless steel for elegant all-glass appearance without profiles	
	Components	All glass (horizontal profiles) and fully framed glass (horizontal and vertical profiles)		All glass (single-point fixings)	
	Application	Internal applications		Internal applications	
Dimensions	Element width in mm	800 – 1,300		800 – 1,300	
	Element height in mm (max.)	3,500*	4,000	3,500*	4,000
	Element weight in kg (max.)	300	250	300	250
	Glass thickness in mm	TSG: 10, 12; LSG: 11.5		TSG: 10, 12	
Operating system	Manual	Light, manual sliding of the elements. Very simple operation.	Electric single-drive operators for the elements with self-monitoring	Light, manual sliding of the elements. Very simple operation.	Electric single-drive operators for the elements with self-monitoring
	ComfortDrive (fully automatic)	Minimal opening noise thanks to precision tracks of aluminium	processor for maximum reliability	Minimal opening noise thanks to precision tracks of aluminium	processor for maximum reliability
Construction	Glass type	Toughened safety glass (TSG), Laminated safety glass (LSG)		Toughened safety glass (TSG)	
	Fixing elements	Horizontal aluminium clamping profiles; aluminium covers; plastic end covers; optional vertical profile framing		Flush-mounted single-point fixings of stainless steel	
	Sealing top/bottom	Small gap between element and track		Small clearance between element and track	
Equipment	Glass framing	All glass: horizontal Fully framed glass: horizontal and vertical		Stainless steel single-point fixings	
	Element types	Full wall element, pass door element (stationary or sliding), angled element, corner element, wall abutment element		Full wall element, angled element, corner element, wall abutment element, pass door element	
	Pass door elements with bespoke handle	Fixed full-height double action door as wall abutment element. Sliding pass doors, single or double-leaf		Fixed full-height double action pass door as wall abutment element	
	Door closers	Overhead door closer for sliding pass door element, floor spring for fixed full-height pass door element		Floor spring for fixed full-height pass door	
	Element locking	Floor bolt locking device provided per element; locking of the elements to one another by interlocking profiles to prevent lever attack ('jemmying')		Floor bolt locking device provided per element; unlocking protection to prevent unauthorised opening; guide, glass fixing and locking device as single functional unit	
Security		• Electrically locking panic locks (EVP)to lock automatically • Blocking element (shunt lock) to activate burglar alarms • Contact bridge to detect low-voltage currents to the alarm system • Bolt contact to check locks			

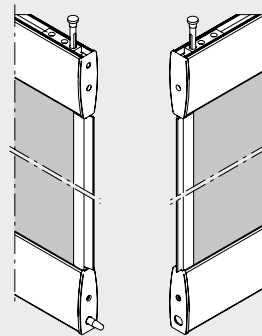
\*up to 4.000 mm possible on request

## TYPE OVERVIEW

### Compactline

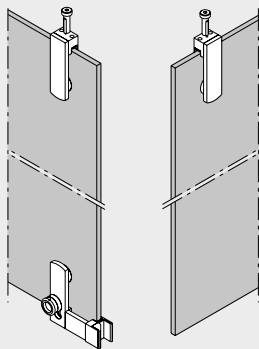


Compactline G all-glass

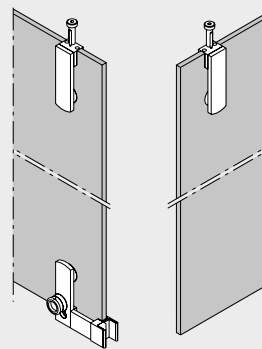


Compactline P framed glass

### Metalline

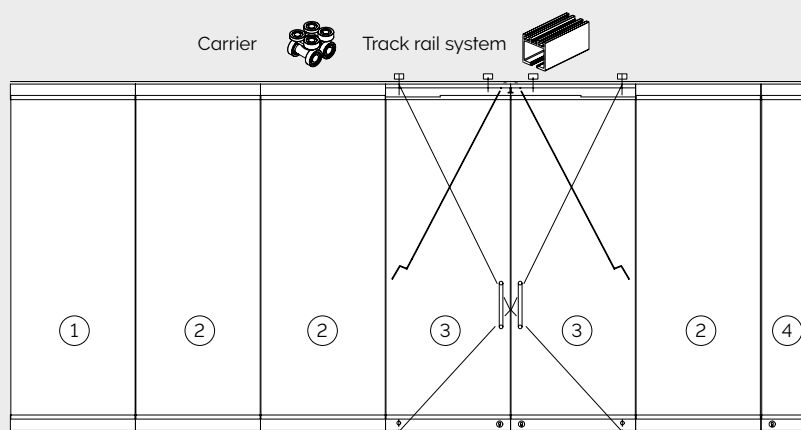


with put on fittings



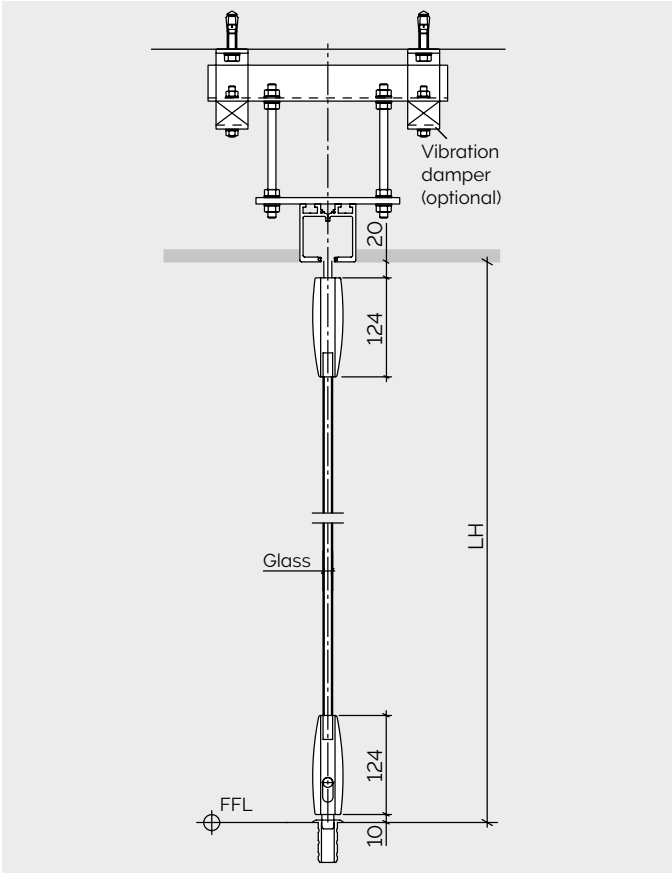
with flush-mounted fittings

### Partition assembly

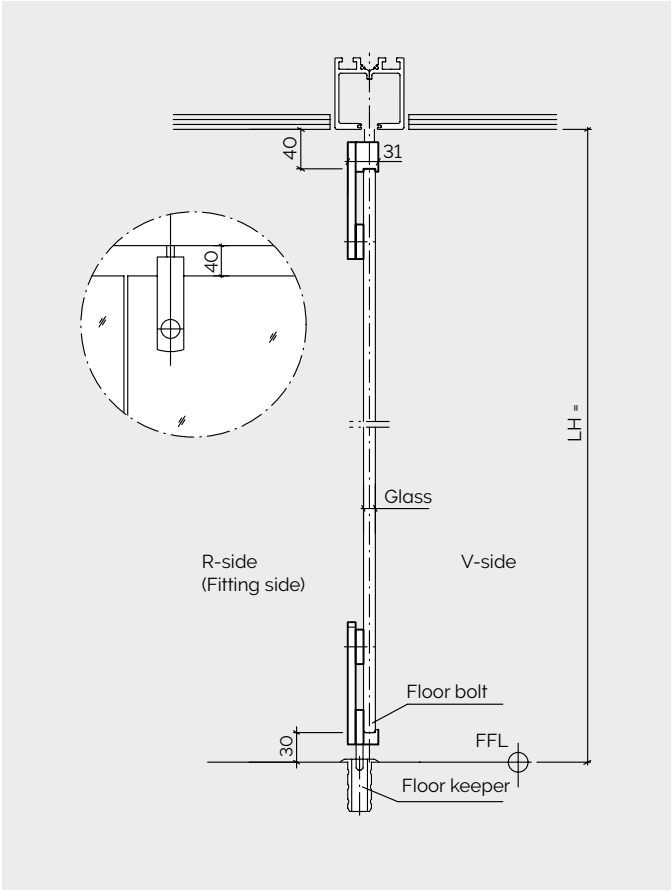


1. Stationary full wall element
2. Sliding full wall element
3. 'DTZ' sliding double pass door
4. Wall abutment element

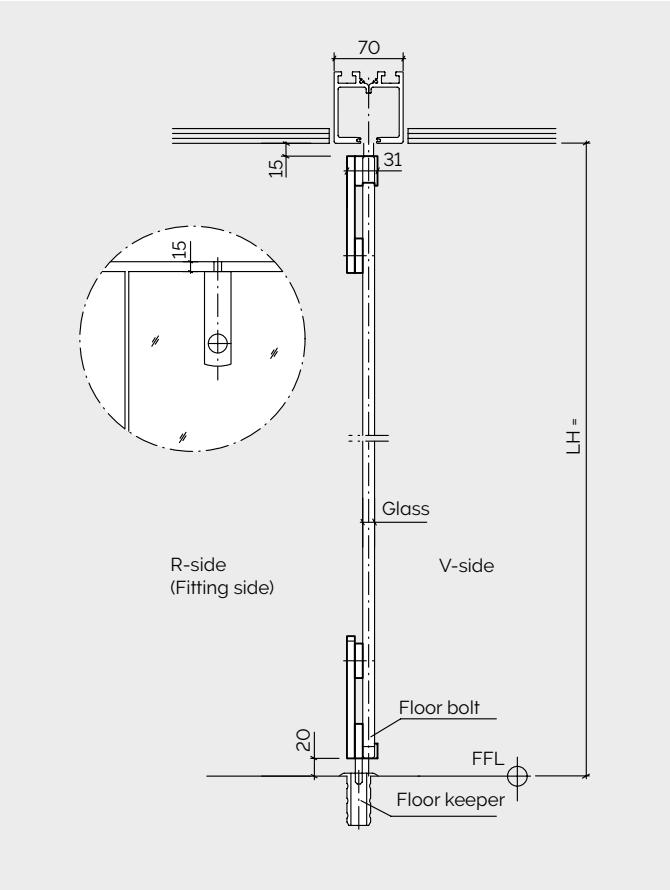
Compactline – All Glass



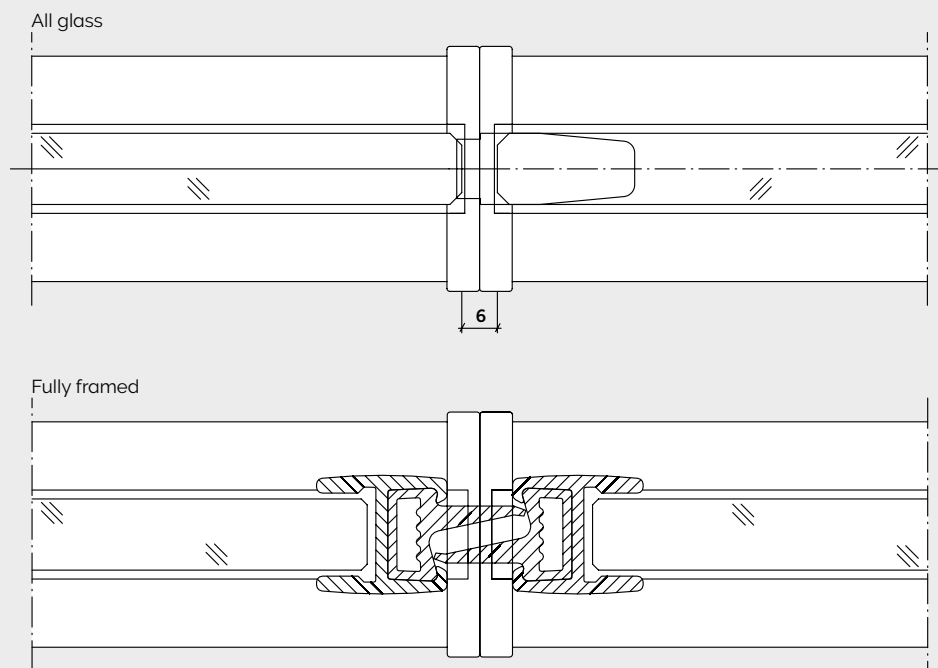
Metalline with put on fittings



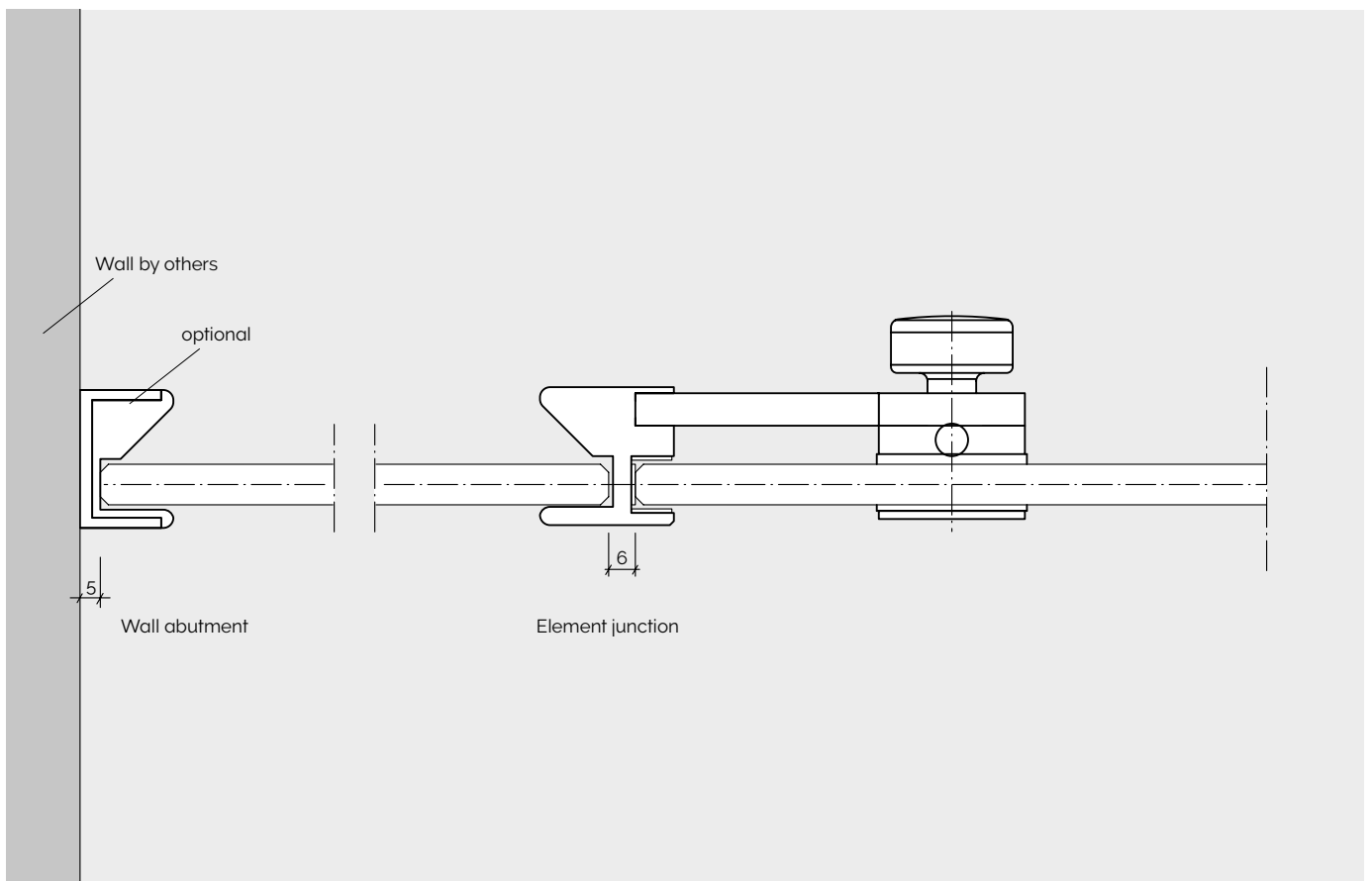
Metalline with flash-mounted fittings



## Compactline



## Metalline



COMPACTLINE – ALL GLASS

VE

Full wall element

EE

Corner element

WE

Angled element 160° – 175°

WE

Angled element 99° – 159°

WK

Wall abutment element

PT

Double action door, fixed

DT

Pass door, sliding\*

DTZ

Pass door, sliding\*

COMPACTLINE – FULLY-FRAMED

VE

Full wall element

EE

Corner element

WE

Angled element 99° – 175°

WK

Wall abutment element

PT

Double action door, fixed

DT

Pass door, sliding\*

DTZ

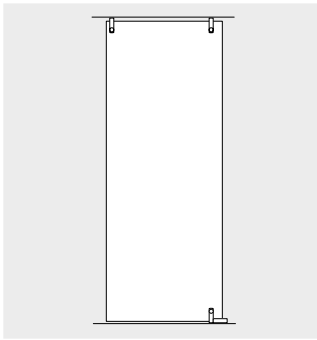
Pass door, sliding\*

\*not for Varitrans-ComfortDrive



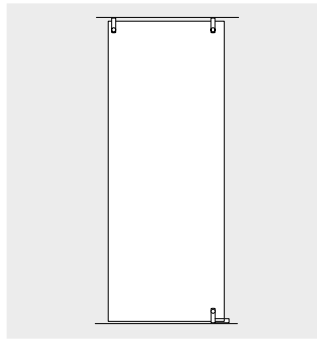
## METALLINE

**VE**



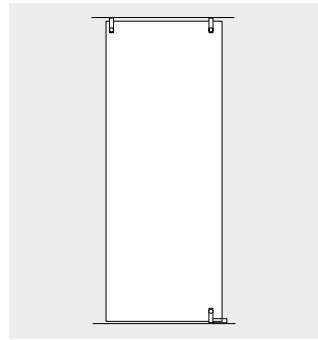
Full wall element

**EE**



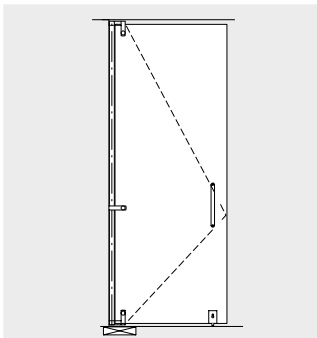
Corner element

**WE**



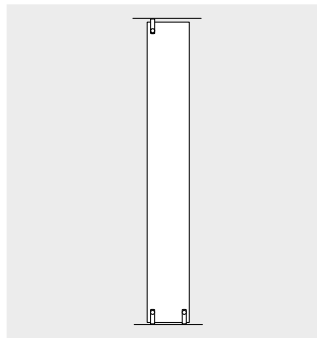
Angled element

**PT**



Double action door, fixed

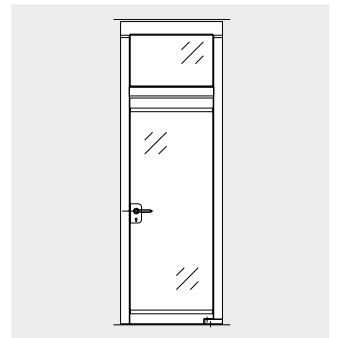
**WK**



Wall abutment element

For Metalline and Compactline.  
Full Automatically operable pass door (can also be used for manual system)

**DT-H**

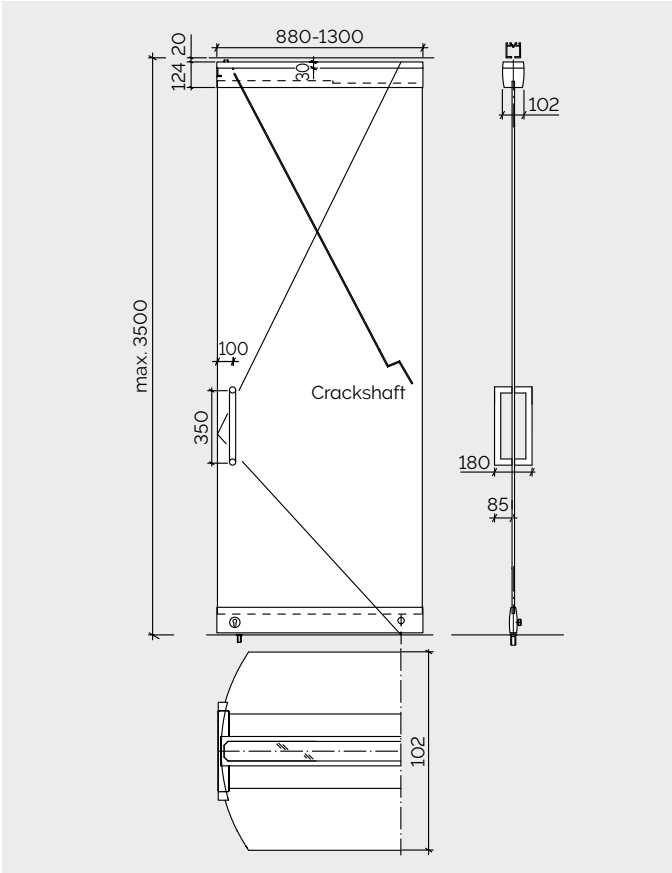


Pass door, H-frame

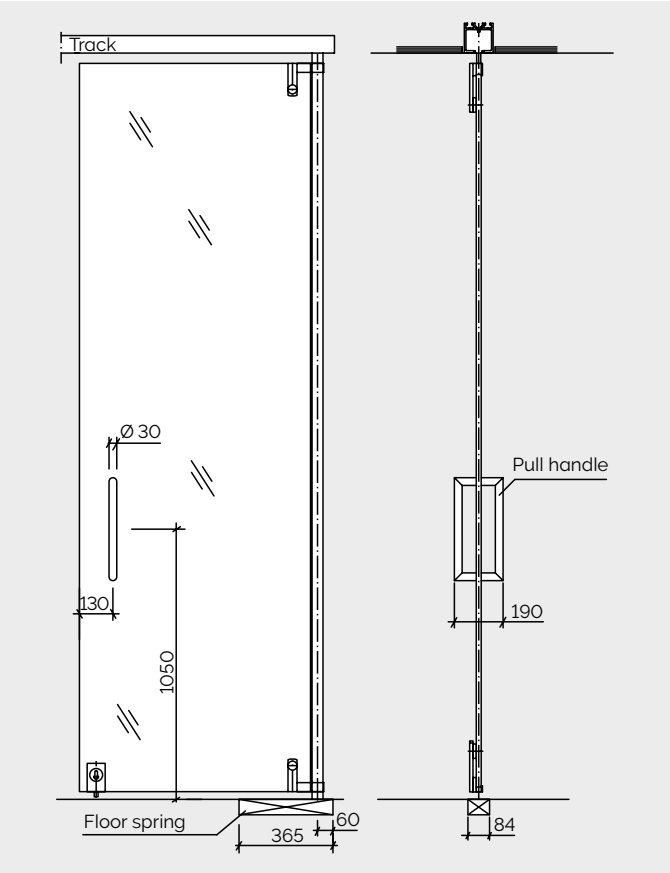


DETAILS OF ELEMENTS (PT, DT, DT-H)

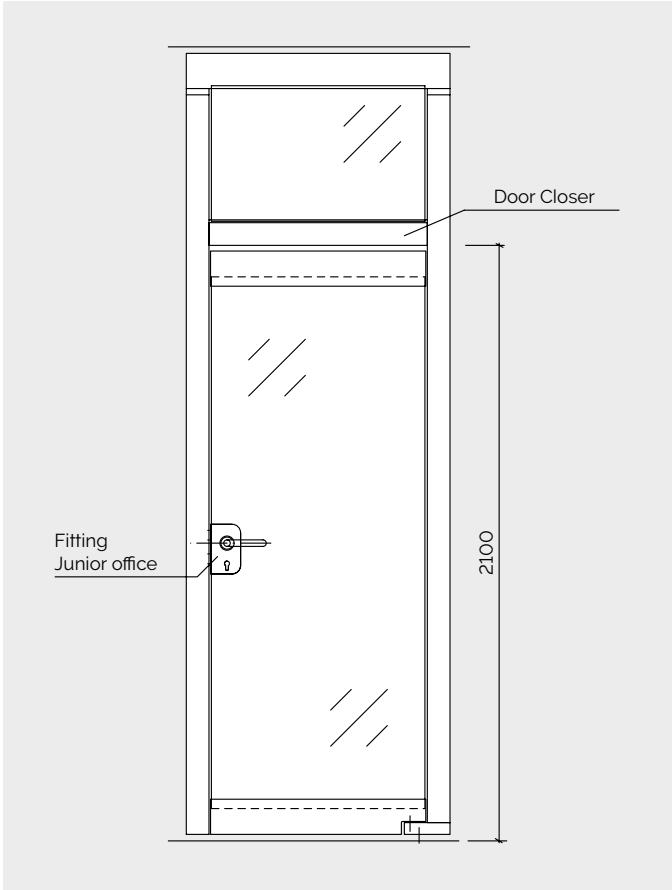
Compactline access door (DT)



Metalline Double action door (PT)



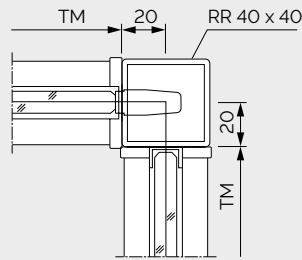
Pass door movable with H-frame (EM)



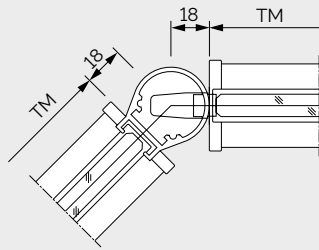
## DETAILS OF ELEMENTS (CONNECTORS, WA, SL)

### Connectors

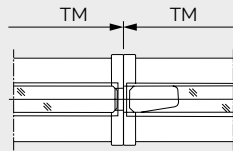
90°-angle connector



91° – 175° angle connector



Inter-element joint

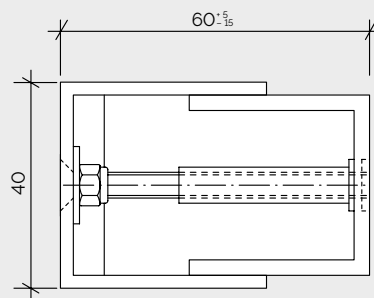


Presentation by the example Compactline

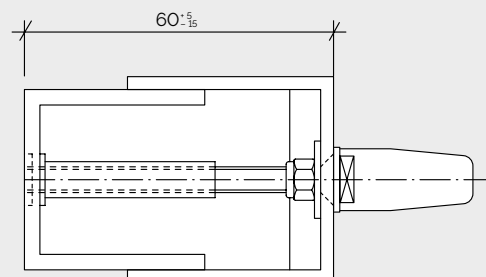
### Wall abutment / Concave wall abutment

Optional for: Metalline  
Compactline framed glass  
Compactline all glass

Wall abutment



Concave wall abutment



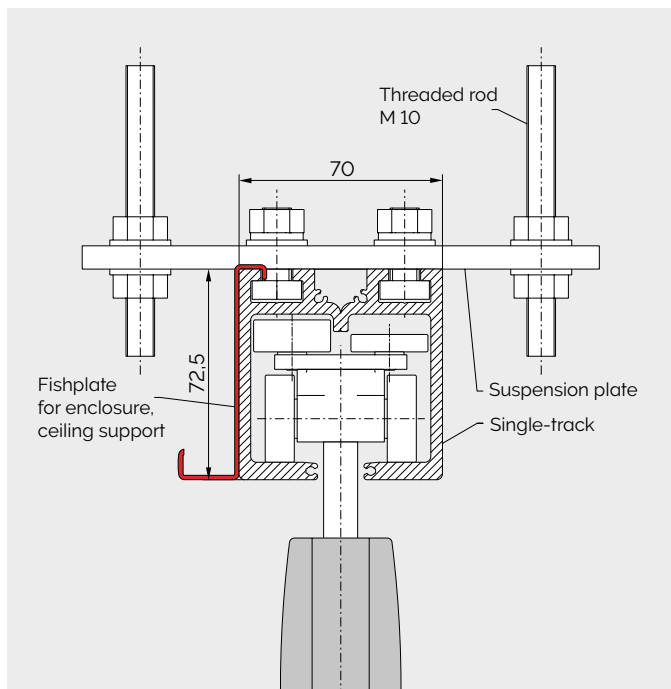
Presentation by the example Compactline

## TYPE K TRACK SYSTEM

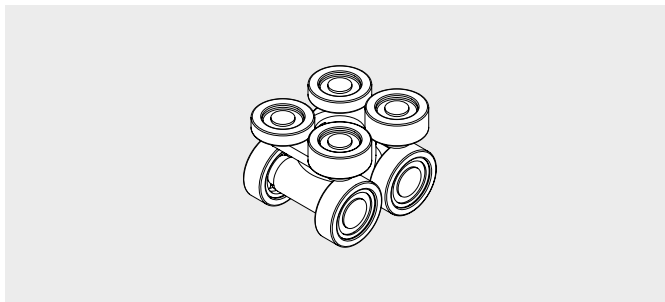
Track system featuring minimum dimensions. The mechanically coded branching system with curves and switches ensures simple operation when moving the elements. Curved system configurations are possible. Element weight up to 250 kg.



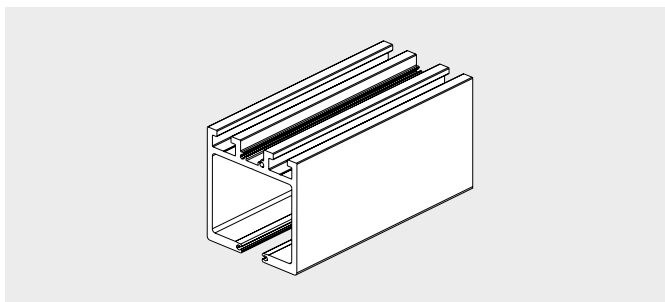
### Vertical section through K track – Varitrans



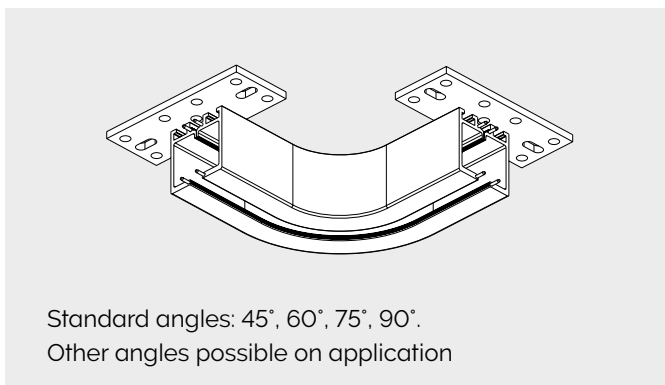
### Roller assembly



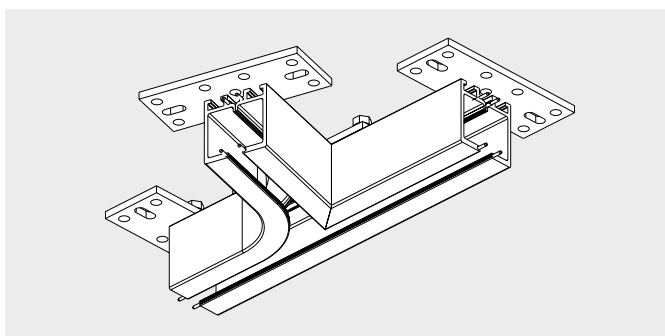
### K track, straight



### K track, curved

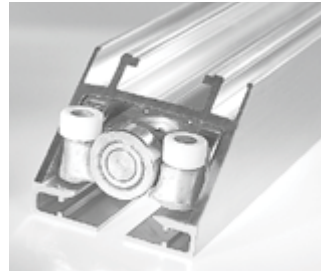


### K track switch

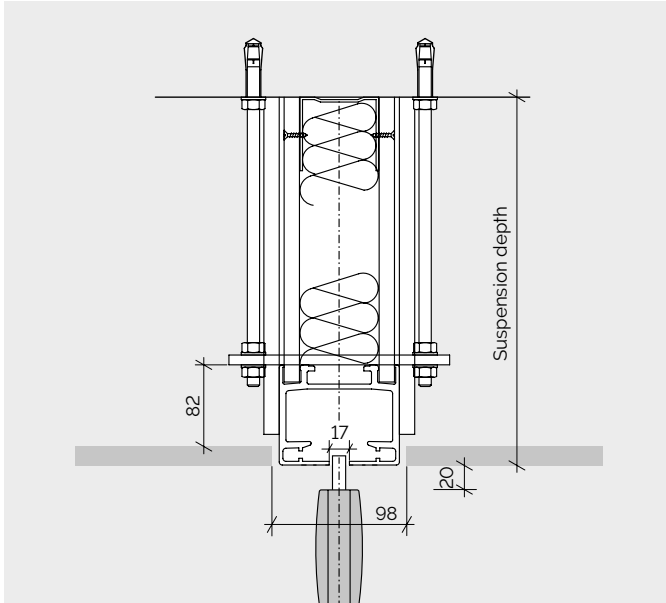


## TYPE R TRACK SYSTEM

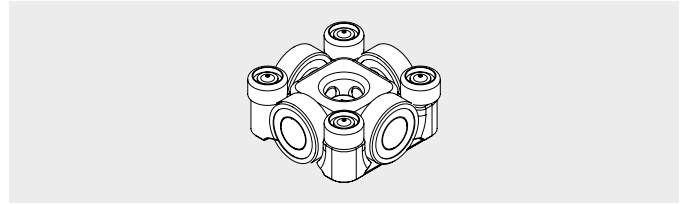
Track system for 90° branches with cross-roll travel paths. Suitable for a wide range of layout designs. Guide rollers in the branching junctions and intersections ensure that the elements remain level as they cross or change direction.



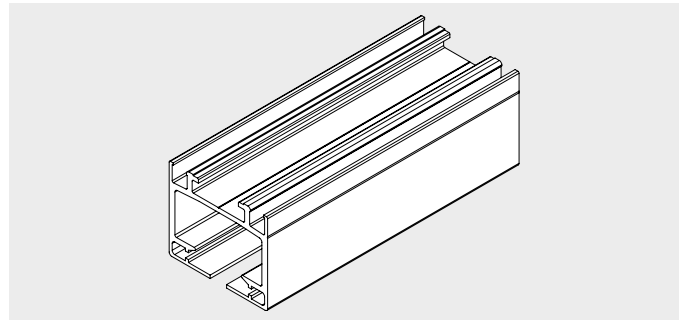
**Vertical section through R track**



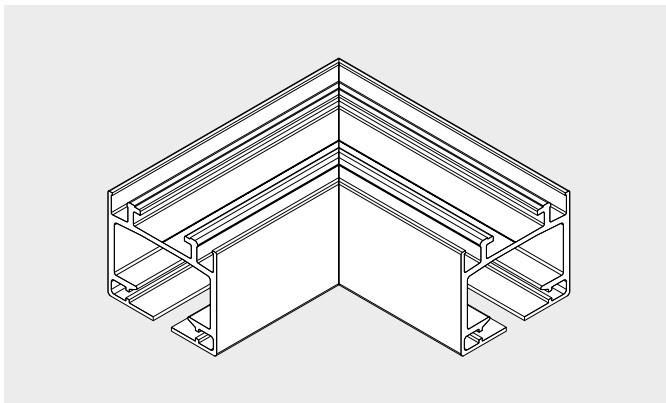
**Roller assembly**



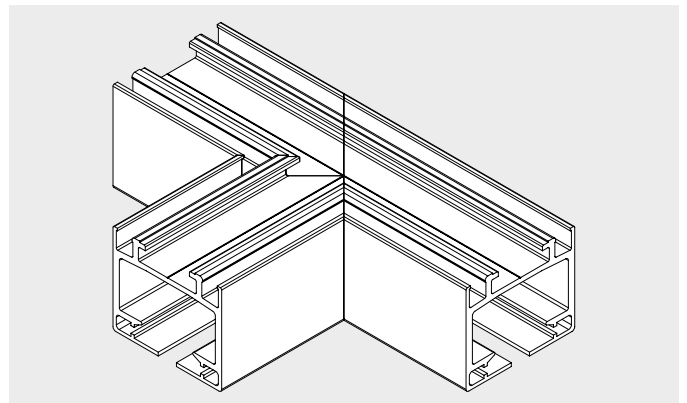
**R track**



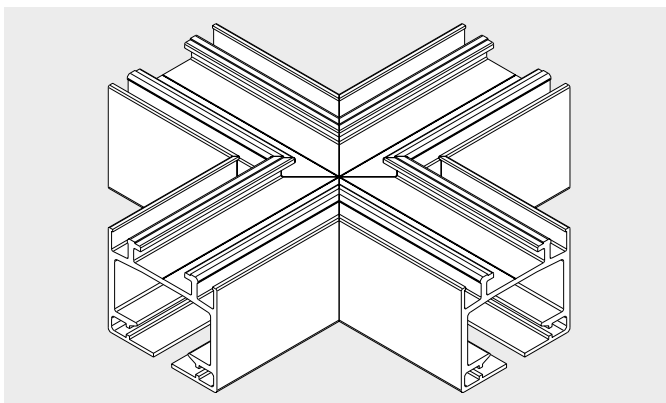
**Corner section**



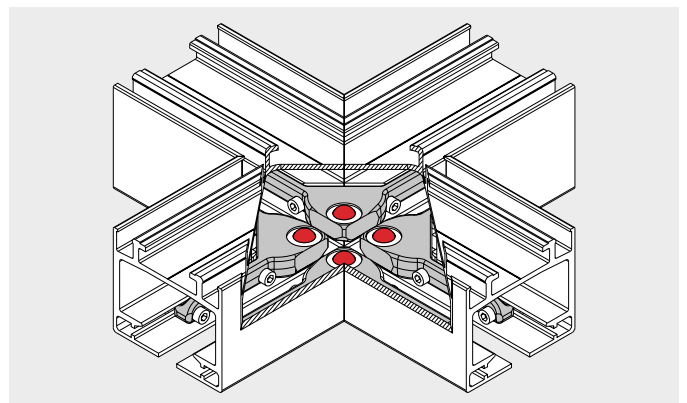
**T-piece**



**Intersection**



**Intersection with support rollers**

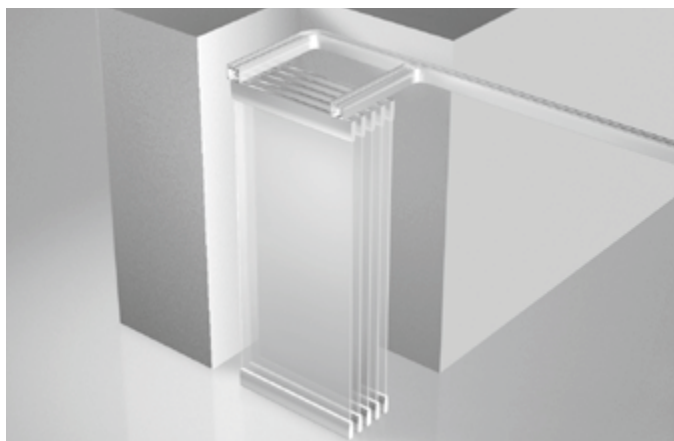


## PARKING LAYOUTS

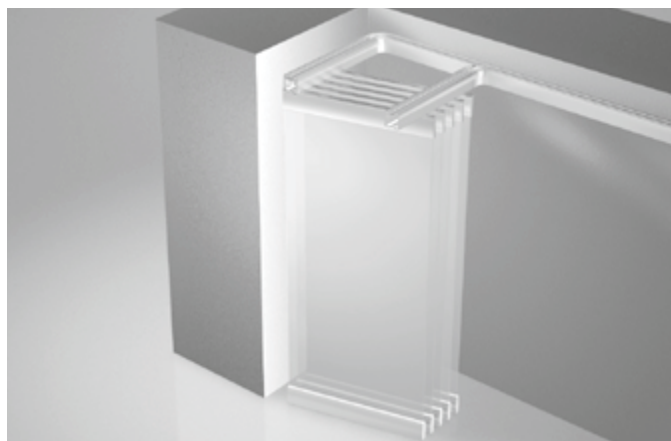
The individual elements of the DORMA Hüppe Varitrans system only require a small amount of space when stacked out of the way. They can therefore be parked in any small pocket or corner for maximum visual tidiness. The individual panels move so easily that transfer to the stacking section and the parking operation itself could not be easier. The requirements of the manual and automatic modes are, however, different. Consequently, it is advisable during the

planning phase to consult DORMA Hüppe as to which stacking track configuration is the best suited to your application. Irrespective of whether the system is automatically or manually operated, however, maximum functional reliability and convenience are always ensured. Depending on the requirements of the application, the parking of the panels can be implemented in various ways. The following figures show just some of the possibilities available.

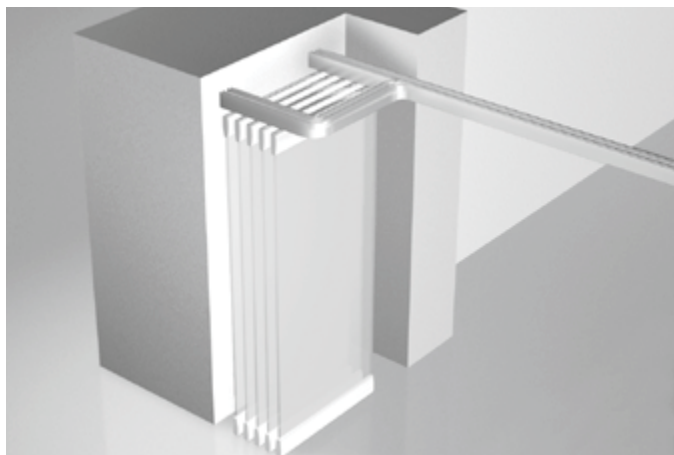
**A:** Parallel stacking in a niche or pocket



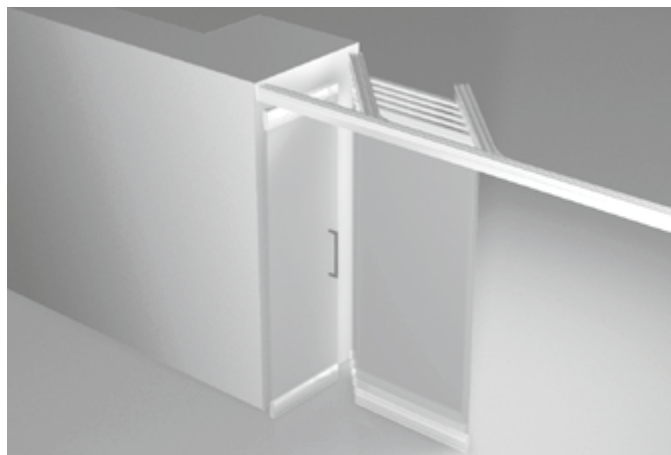
**B:** Slightly angled stacking



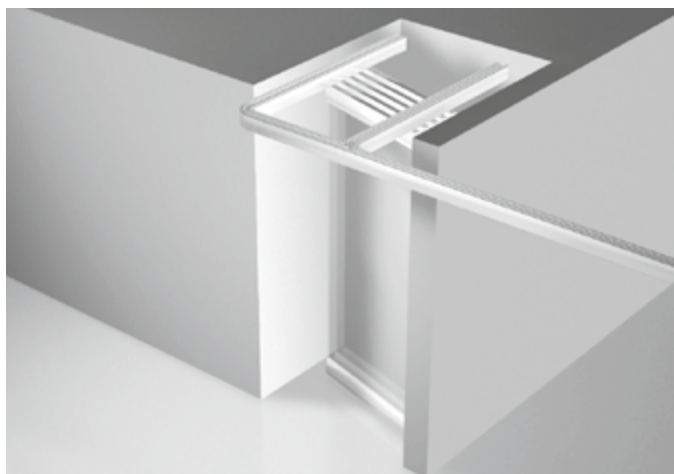
**C:** 90° stacking in an open panel pocket



**D:** Stacking at a slight angle in the through-passage area



**E:** Stacking in a U-pocket



**F:** Left and right "goalpost" stacking

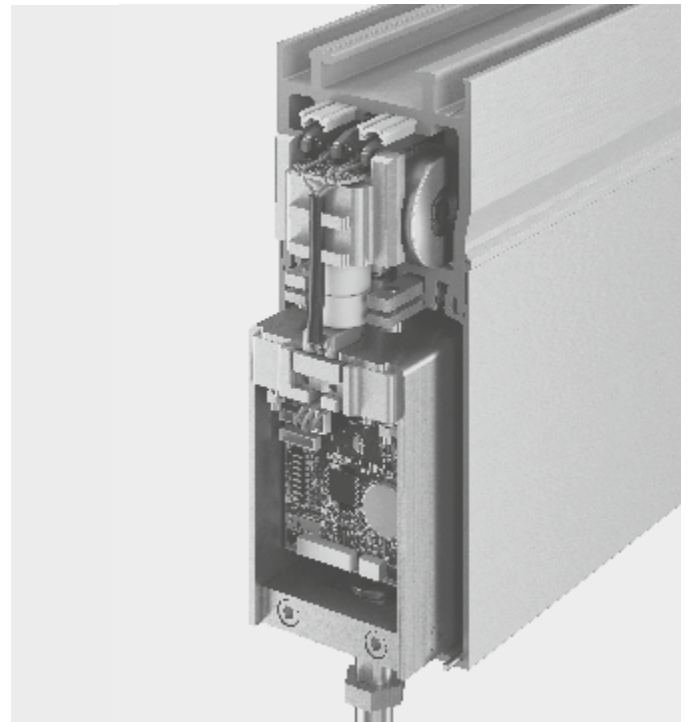
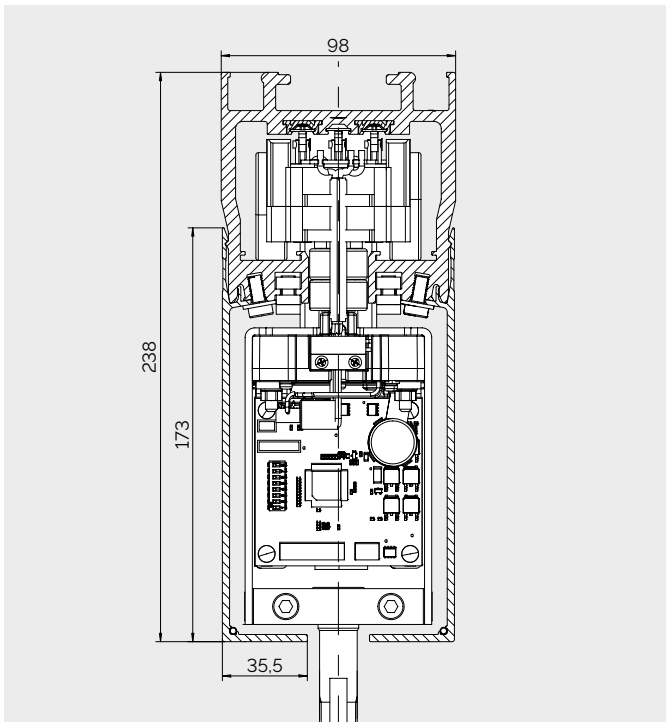




## TRACK SYSTEM FOR FULLY AUTOMATIC DRIVE

In the fully automatic ComfortDrive model, the elements move to their individually preprogrammed positions at the push of a button, offering maximum convenience with fast location and removal speeds. And both segmented and curved track configurations are possible. You can find further details on the Varitrans featuring the automatic operator system in the technical brochure entitled Varitrans ComfortDrive.

### Varitrans ComfortDrive



Presentation with drive wagon





dormakaba Group

WN 052 834 51532 · EN · 05/18 · Subject to change without notice



SCAN & EMAIL ME



 [www.worldhomedepot.com](http://www.worldhomedepot.com)  WorldHomeDepotCorporation

**MAIN OFFICE**

20 Fortune Avenue, corner Santan Street  
Brgy. Fortune, Marikina City, PH 1809  
Phone: (632) 87901000  
Fax Sales: (632) 87901015 to 16  
Fax Operations: (632) 87901013 to 14  
Email: [info@worldhomedepot.com](mailto:info@worldhomedepot.com)

**DAVAO OFFICE**

Unit 01-02 DEPC Warehouse, Brgy.  
Communal Diversion Rd., Davao City, PH 8000  
Phone: (082) 2340911 to 14  
Fax: (082) 2340914  
Email: [info.davao@worldhomedepot.com](mailto:info.davao@worldhomedepot.com)