



World Home Depot
C O R P O R A T I O N

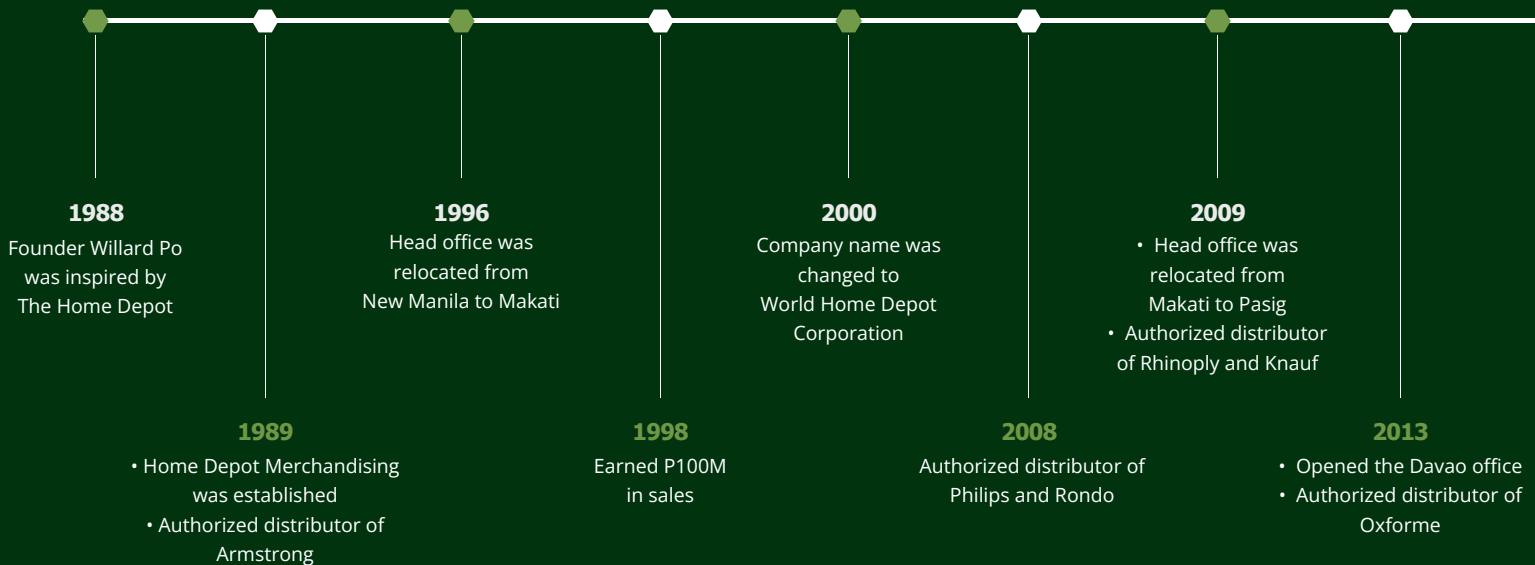
From start to finish,
**Your Construction
Solutions Specialist**



COMPANY HISTORY

Since its establishment in 1989, World Home Depot Corporation has been a reliable source of comprehensive construction and finishing materials for the Philippine construction industry's finest contractors and developers. Our company was founded with humble beginnings and a grand vision to become a leading distributor of high-quality finishing construction materials in the Philippines. For over three decades, we have continuously experienced growth and development in our products, business models and employees. Today, with our founder and CEO at the helm, we have secured our position as an industry leader and stand proudly among the top importers and distributors of structural and architectural assemblies in the Philippine construction industry. World Home Depot Corporation takes great pride in being your construction supply specialist from start to finish.

MILESTONES



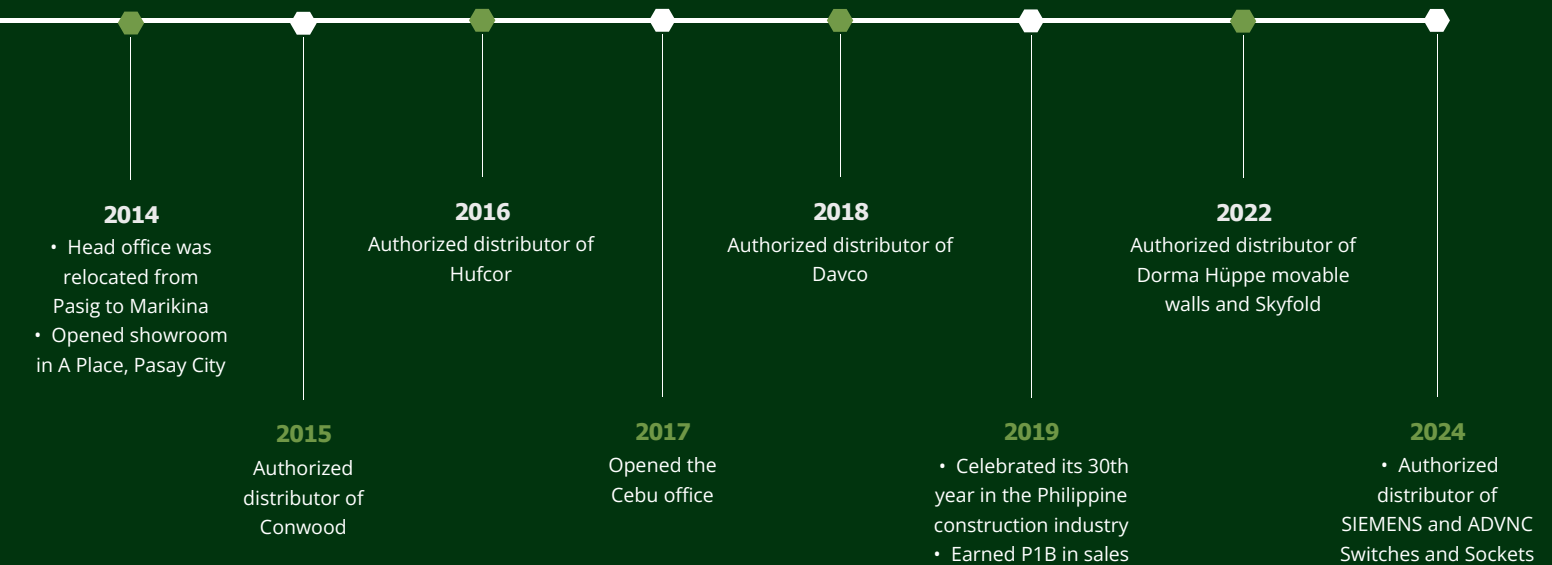
MISSION

World Home Depot Corporation is committed to the reliable delivery of time-proven, high-quality products and materials imported directly from manufacturers. To meet the ever-evolving needs and demands of the local market, we continuously develop and introduce new systems, products and solutions that are simultaneously superior and affordable. We strive not only to serve our growing list of valued clients nationwide but also to support the Philippine construction industry as a whole.



AFFILIATIONS AND PARTNERSHIP

World Home Depot Corporation partners with esteemed organizations in construction, real estate, mass housing, government, and business process outsourcing to further advance the development of infrastructure in the Philippines. Our company advocates Green Building principles, and promotes the use of sustainable building materials to create healthy and livable spaces. We also strive to make a tangible positive impact by giving back to our community and achieving our corporate social responsibility goals.



VISION

World Home Depot Corporation aims to be the Philippines' number one provider of high-quality construction materials and services.



OUR ORGANIZATION

Sales

Our Sales Department is dedicated to driving revenue growth and fostering professional relationships by serving as the primary point of contact for our customers. We prioritize delivering exceptional customer service at every stage of the sales process—before, during, and after the transaction. Our Sales Engineers are highly skilled professionals with backgrounds in engineering and construction, enabling them to effectively educate customers about our diverse range of products and services. They play a crucial role in our business development efforts by identifying prospective clients, cultivating strong relationships, closing sales, and ensuring long-term customer loyalty.

Technical

Our team of Technical Engineers brings specialized expertise in organizing and designing systems and solutions that optimize both product performance and space utilization. With their extensive engineering experience, they bridge the gap between specifications and requirements, offering comprehensive technical support from estimate preparation to site inspections. In the realm of research and development, our Technical Engineers drive product and system innovations. Their rigorous testing and analysis contribute to the advancement of superior construction solutions across all phases of a project.

Human Resources and Administration

Our Human Resources and Administration Department (HRAD) serves as the heart of our company culture. The team manages essential human resources functions, including recruitment and hiring, training and development, and overseeing employee benefits and relations. Beyond these core responsibilities, HRAD plays a vital role in fostering our company culture and implementing best practices through administrative services. These services address the needs of employees, employers, third-party stakeholders, legal matters, and government institutions, ensuring smooth operations across all facets of the organization.

Operations

The Distribution and Logistics Department is responsible for ensuring timely and accurate deliveries to customers while maintaining a clean and organized warehouse. Their operations are executed with precision to optimize space and routing, safeguard product security, and maintain a safe fabrication area for specialized products. They efficiently manage the flow of products from our manufacturers to our customers, ensuring seamless delivery and operational excellence.

The Purchasing Department brings expertise in negotiation and import regulations to secure the best terms and pricing for the products offered by World Home Depot Corporation. They work closely with other departments to innovate and enhance the product line by researching potential vendors and sourcing high-quality products for distribution.

Marketing

Our Marketing Department works closely with the Sales Department and Business Development teams to communicate our brand's value and increase awareness. Focused on customer and market research, they identify opportunities for product growth and development. The team is responsible for managing the company's engagement in public forums and maximizing our media presence within the Philippine construction industry.

Business Development

Our Business Development Department is dedicated to driving growth by sourcing business opportunities from both manufacturers and clients. Comprising individuals with extensive knowledge of our products, services, and the industry, the team plays a critical role in identifying and cultivating strategic leads. They conduct in-depth market research, analyze trends, and explore potential partnerships to expand the business on both sides of the supply chain. Their focus extends to building long-term relationships, negotiating key deals, and identifying new market opportunities. By aligning business goals with emerging industry needs, they contribute to the continued success and expansion of the company.

Finance

Our Finance Department oversees all aspects of bookkeeping and financial management for the company. Comprised of several specialized teams, the department is responsible for managing the treasury, organizing cash flow, and handling credit risk, budgets, and forecasts to support sound decision-making for the company's financial health. The team works closely with external auditors to ensure accurate reporting and thorough analysis of the company's financial figures.



TECHNICAL SERVICES



Free Ceiling, Drywall and Flooring Analysis and Estimates

Assist clients by providing an accurate Bill of Materials.



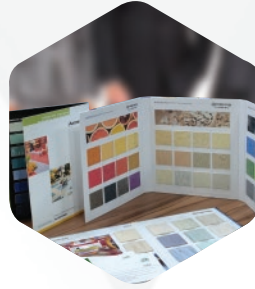
Design Ideas

Provide design options for Architects, Engineers and Customers.



Technical Documents and Mock-up Samples

Provide technical documents and mock-up samples necessary for project proposals.



Product Presentations

Provide support to Sales and Marketing Group for Product Presentations.



Training and Orienttions

Support clients by giving product orientation and training.

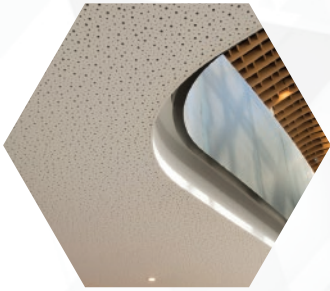


Construction Solutions

Assist clients in solving new and recurrent problems arising from ceiling, drywall and flooring design, assembly and maintenance.

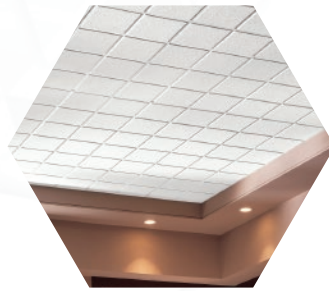


PRODUCT PORTFOLIO



KNAUF

Knauf's comprehensive range of high-quality wall and ceiling lining products are developed with specific characteristics to enhance performance. They provide fire, water, moisture, acoustic and aesthetic solutions for all construction projects.



KNAUFCEILING
Solutions

From sustainable mineral solutions, to durable metal and acoustically optimised wood and wood wool solutions, shapes, textures and colours inspire sustainable design solutions which also offers sound blocking features to reduce sound transmission to adjoining spaces turning interior spaces into amazing experiences.



CONWOOD

Conwood is a wood replacement product that aims to help save the environment. Conwood Co., Ltd., a subsidiary of Siam City Cement, is one of the leading companies in Thailand. Conwood offers the unique beauty of real wood, ease of usage and longer shelf life.

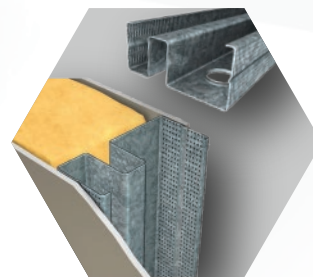


AQUAPANEL®

AQUAPANEL® Cement Board Outdoor is a robust, non-combustible building panel made of aggregated Portland cement with coated glass fibre mesh embedded in back and front surfaces. It offers all the benefits of a dry panel system with the strength of brick and block.



Light Gauge Steel Framing components for concealed (furring) and exposed (t-runner) ceiling systems, drywall partitions, EIFS, and roof framing, ISO 9001: 2000 certified, true to gauge, and conforms to the Philippine Construction Industry standards.

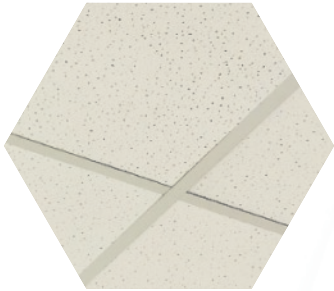


RONDO

A global manufacturing company that specializes in an extensive range of products that formulate systems for the construction industry. Rondo offers a comprehensive design service to assist in all phases, from beginning concepts all the way through to the building completion.



PRODUCT PORTFOLIO



echoscope
CEILING SOLUTIONS

Fincase is a fissured pattern of ceiling tile that is made of mineral fiber. It has great acoustic performance and sound absorption. Its NRC 0.65 sound-absorbing panel is used to mitigate background noise, and reduce the reverberation and echo in a space.



DORMAHÜPPE
dormakaba Group

Dorma Hüppe is part of the Dormakaba Group and makes up the Movable Walls business unit. Dorma Hüppe is one of the leading providers of high-quality partition systems for hotels, convention centers, office buildings, showrooms, banks, trade fairs, shopping centers, etc.



ECHO GUARD
SOUNDBOARD

Echoguard Soundboard is a perforated gypsum board with tapered edges designed to create aesthetics whilst providing excellent sound absorption to the space.



Yale is one of fifteen brands represented by ASSA ABLOY Door Security Solutions. ASSA ABLOY is the global leader in door opening solutions, dedicated to satisfying end-user needs for security, safety and convenience.



TECHNO
FRAME

The new improved TECHNO A-Series Access Panel comes with a new tubular aluminum profile that provides a much more robust frame. Plus, the new profile makes the panels better stacked and more stable for delivery and the design looks neater with fewer exposed components. Screw protectors are no longer required, making installation faster and easier to handle.

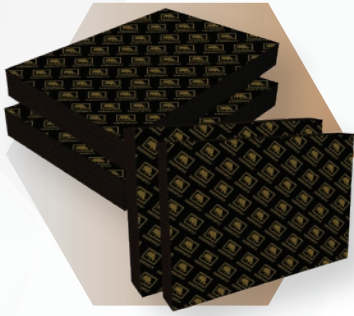


Armstrong
Flooring

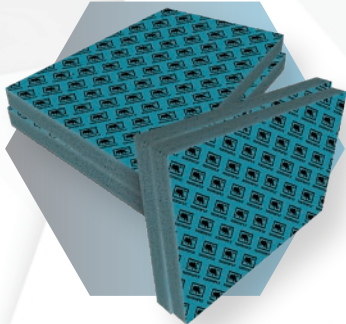
Armstrong Vinyl Flooring is a durable, scratch-stain-chemical resistant flooring material with a wide range of colors and patterns to complement interior designs. It is easy to maintain and install when used with Vinyl Sheet application and its complete floor preparation in welded and seamless connections. It can reduce installation time by almost half.



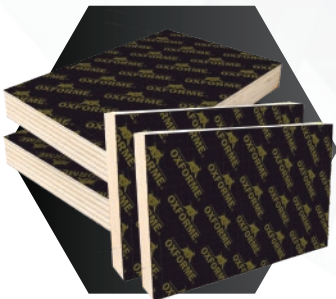
PRODUCT PORTFOLIO



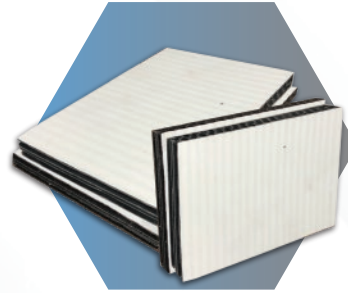
RhinoPLY Phenolic Board is guaranteed Grade A/A Formwork Lining, produced under high quality ISO and CE Certified Manufacturing Standards giving you MAXIMUM USAGE & MAXIMUM SAVINGS.



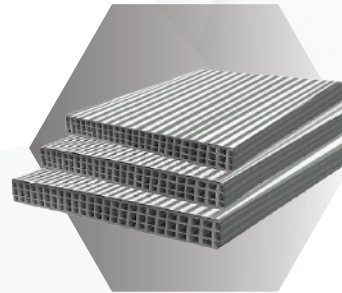
RhinoPLY Max PVC phenolic film faced plywood is a construction material commonly used in various building and industrial applications. It consists of a plywood core that is coated on both sides with a layer of phenolic resin-impregnated film, which is then covered with a layer of PVC (polyvinyl chloride) for added protection.



Oxforme Phenolic Board is a formwork lining engineered to deliver optimum performance for low-to-mid usage requirements. Double Grade AA with ISO and CE Certification, it provides a combination of quality and affordability.



Plyforme Polypropylene Board is an innovative solution in the construction industry, emphasizing its environmental benefits, cost-effectiveness, and efficiency. Designed to meet the demands of expansive construction projects, our formwork solution offers 60-100 suggested usages, facilitating the seamless construction of columns, foundations, retaining walls, and concrete slabs with ease.



MC PP Hollow Board is the latest game-changing formwork product in the construction industry. Made from high-grade polypropylene, it offers a sustainable alternative to traditional phenolic boards and plywood. Highly durable and weather-resistant, it can be reused 40-50 times, making it a cost-effective and eco-friendly choice for modern construction projects.



Flexboard is manufactured in accordance with the highest products and quality control measures. It is made from a homogenous mixture of Portland cement, fiber, cellulose, and water. Flexboard does not contain refined silica sand.

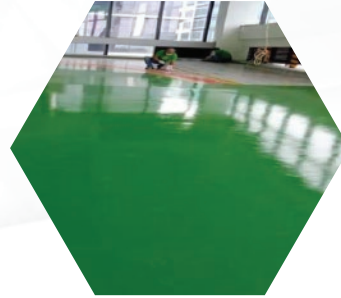


PRODUCT PORTFOLIO



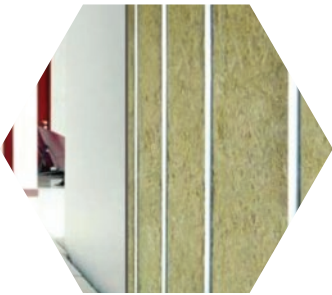
MicroFiber®

MicroFiber White Wool is a formaldehyde-free glass wool insulation solution that guarantees its users' safety and achieving sustainable building standards in Thailand. It is made from a cutting-edge binder solution that is environmentally friendly and safe for health.



OPTIMO

Optimo specializes in the production of premium quality construction chemicals such as skimcoats, tile adhesives, rendering repair mortar, and decorative finishes through technology and innovation.



STONEWOOL

STONEWOOL is made of inorganic fibers derived from basalt, a volcanic rock. Advanced manufacturing technology ensures consistent product quality. With high fiber density and low shot content, it is fire-resistant and performs excellently in high temperatures.



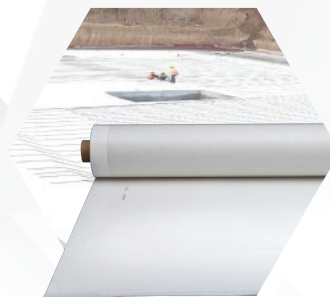
Sika®
BUILDING TRUST

Sika is a company that develops as well as produces systems and products for bonding, sealing, dampening, reinforcing, and protecting.



ROCKWOOL®

Rockwool products are non-combustible, particularly suitable for thermal insulation, fire protection and sound reduction/absorption. It is inorganic and contains no nutritious substances. Mineral wool will not rot and does not attract vermin.



ORIENTAL YUHONG

High-Density Polyethylene (HDPE) Self-Adhesive Waterproof Membrane is specially used in underground project, it can bond with concrete layer tightly. After membrane bonding with concrete, water can be blocked between membrane and concrete, which can improve the reliability.



PRODUCT PORTFOLIO



SIEMENS

SIEMENS is a well-known and reputable brand in the field of electrical engineering and automation. When it comes to switches and sockets, SIEMENS offers a range of high-quality products that are designed to provide reliable and efficient electrical connections in residential, commercial, and industrial settings.



Appropriate Devices and Network Connectivity Inc. (ADVNC) is a master distributor of SIEMENS electrical wiring devices in the Philippines, offering durable, reliable, and easy-to-install switches, sockets, and wiring devices. Focused on energy efficiency and modular design, ADVNC ensures compatibility with other products and manufacturers.



PHILIPS

Philips Professional Lighting System is the first and only complete professional lighting solution in the country. A combination of superior design expertise, advanced technology and a wide array of products, from lighting design to application.



W High-Density LED Panel Light stands among others with its astonishing performance that can light up your energy in the office. Experience quality luminaires by having our W High-Density LED Panel light that can provide you with natural outdoor gleam as daylight.



Merino is an integrated manufacturer and marketer of interior solution with a wide array of world-class products for homes, offices, commercial and public areas. The company emphasizes affordability, product excellence, and ethical business practices. As one of the world's largest manufacturers of decorative laminates, Merino is globally recognized for its quality and innovation.



PROJECTS

World Home Depot Corporation believes that the diverse range of our completed projects is a testament to the top-notch quality of our work and services. Regardless of scale, every single project is handled with the utmost precision and professionalism. Our decades of industry experience and in-depth situational grasp are invaluable tools in any construction project. We are ready to meet the needs and demands of our clients. We are immensely proud of all our contributions to the Philippines' infrastructural progress and economic growth.



Ayala Mall Feliz



The Podium



Bunting Farm



Metro Railway Transit 7



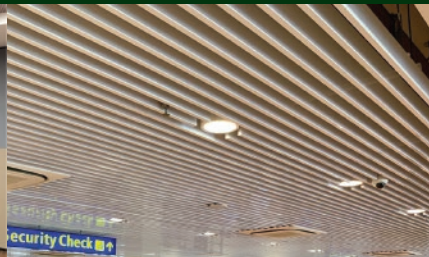
Aqua Boracay



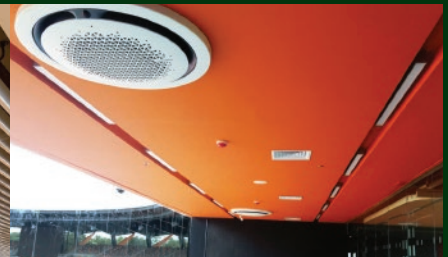
Cultural Center of the Philippines



Chinese General Hospital and Medical Center



Bohol-Panglao International Airport



Sea Games Athletic Stadium



Cinnabon Ayala Malls Manila Bay



Lancris Residences Clubhouse



Hilton Manila

OUR CLIENTS

World Home Depot Corporation works closely with a wide array of clients nationwide, from small-scale contractors to construction empires, our promise to our clients does not change. We are proud to be their trusted partner, and we are deeply honored that we have been chosen as their preferred provider of high-quality construction materials and services.



The Church of Jesus Christ of Latter Day Saints



Robinsons Magnolia



Rockwell Retail Office



Cognizant Giga Tower



Shangri-La's Mactan Resort & Spa



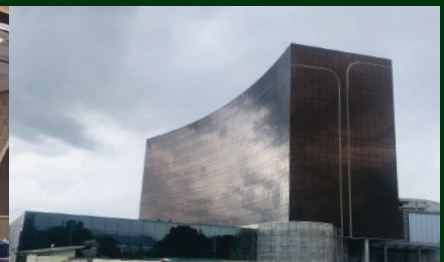
Providence Hospital



Amanpulo



Shangri-La at the Fort



Royce Hotel



Lyceum Of The Philippines University



OFW Hospital



Tulfo Residences



MAIN OFFICE

20 Fortune Avenue corner Santan Street

Brgy. Fortune, Marikina City, PH 1809

Phone: +63 (2) 8790-1000

Email: info@worldhomedepot.com

DAVAO OFFICE

Unit 1&2 Tristar Warehouse, KM 11 Brgy.

Communal Diversion Road, Davao City, PH 8000

Phone: +63 (82) 234-0911

Email: info.davao@worldhomedepot.com

 www.worldhomedepot.com

 WorldHomeDepot

 WorldHomeDepot

